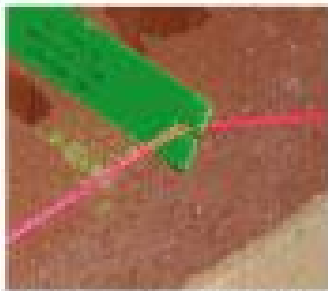


EZ Twig Easy Instructions

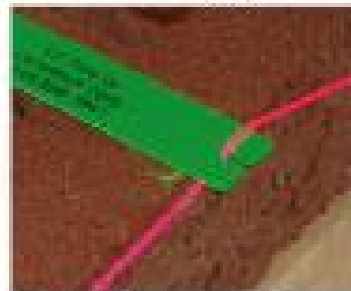
at the ends...

step ①



insert line in single notch

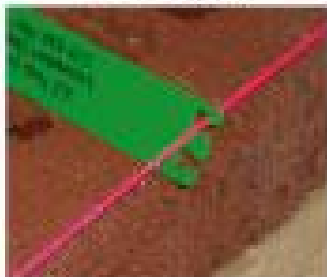
step ②



lay flat on brick with line under the EZTwig in direction of units to be laid

in the middle...

step ①



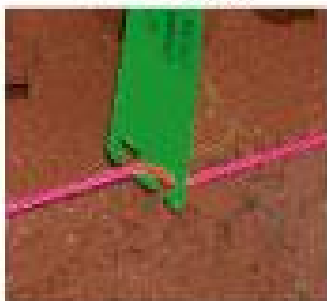
insert line in top notch

step ②



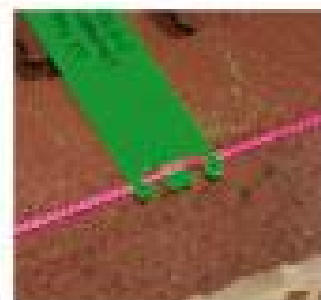
turn EZTwig 45°

step ③



turn EZTwig so that line sides over nose into second notch

step ④



EZ Twig in place